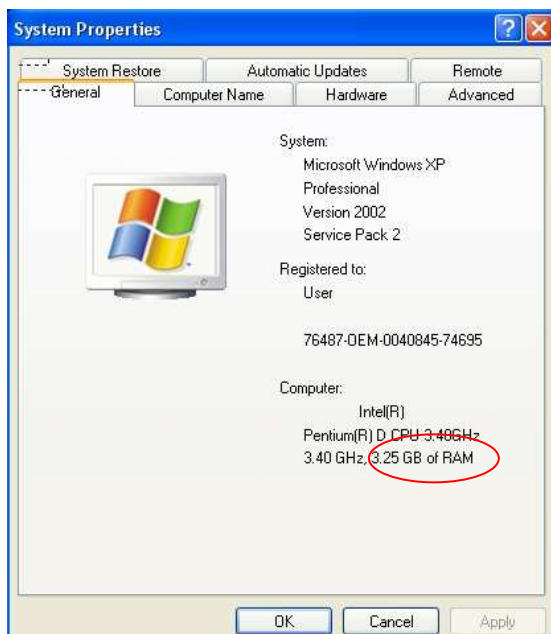


Gravity PAE setup on Windows XP

The EFCAPI device driver cannot be used on Windows or Linux systems with more than 3G bytes of memory and PAE turned on, This limitation requires that PAE (Physical Address Extension) not be used.

WARNING: This procedure involves modification of Windows system files and Windows initialization files. If done improperly, this can result in an unstable or unusable system. This procedure should only be performed by individuals competent in Windows system administration.

A system can be checked by showing Properties of “My Computer”. The box should look similar to the following. Note memory is 3G bytes or less or there is no PAE
If more than 3G of memory is installed and PAE is turned off, the driver will work correctly.



Two options exist to fix this issue.

1. Remove memory from system until 4G or less remains. This option is preferred and actually works best as a 32bit Windows XP install does not utilize memory above 4G efficiently even if PAE is enabled.
2. Modify the “boot.ini” file per instructions below

The “boot.ini” file is located in the root of the C:\ drive and can be edited with any text editor

Refer to Windows support for information on how to turn off PAE, but basically the “boot.ini” file must be modified to include the following line.

```
/fastdetect/noexecute=alwaysoff/NOPAE
```

For information on Linux and PAE, refer to the EFCAPI Linux Installation Guide.