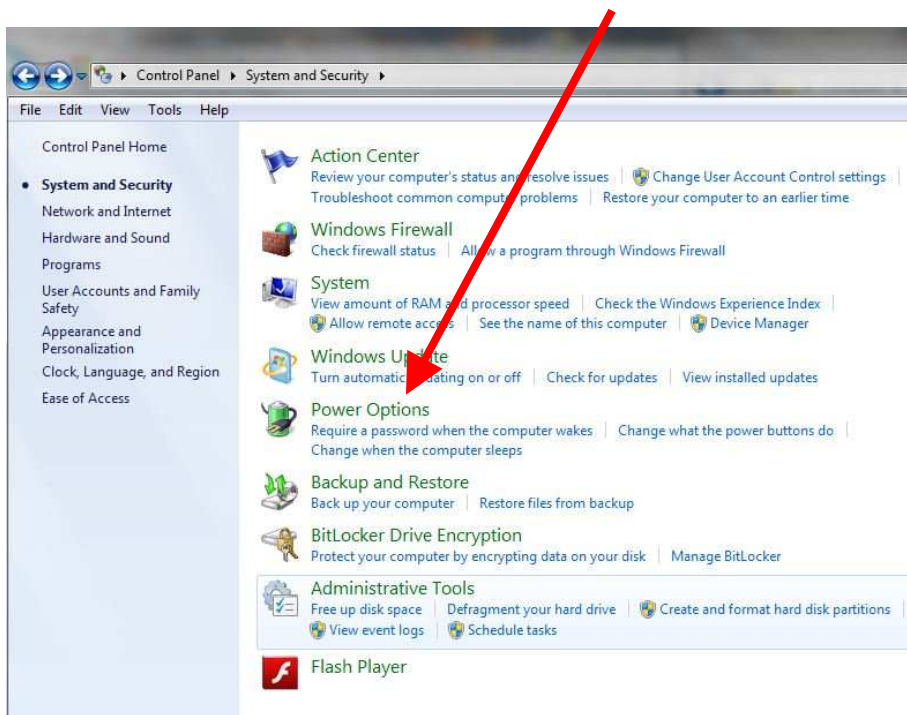


PCIe Link State Power Management in Windows 7

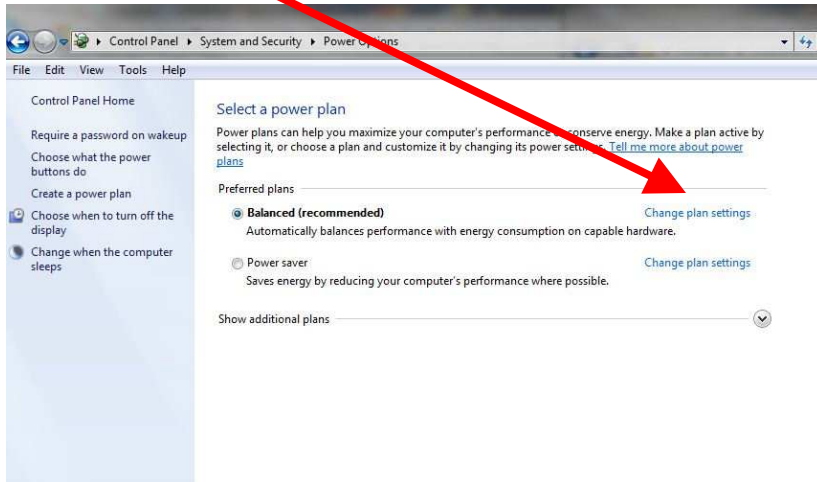
This article provides information on how to disable PCIe Link Power Management in Windows 7 which in some systems will reset the Matrix cards configuration space registers and prevent operation of the card.

This is done in the power management section of the control panel. Perform the following steps to assure this setting is “OFF”

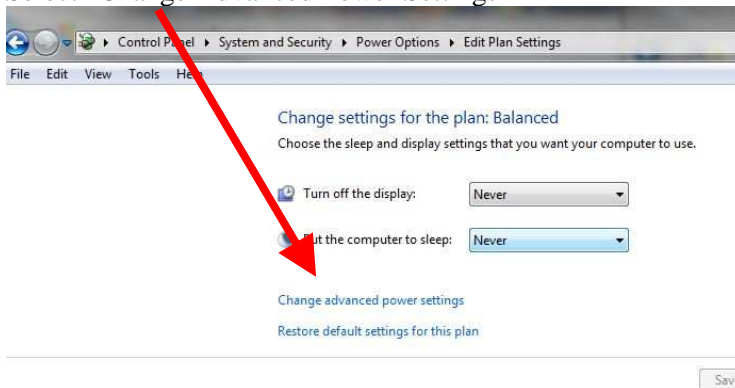
Open Windows 7 Control Panel and select “Power Option”



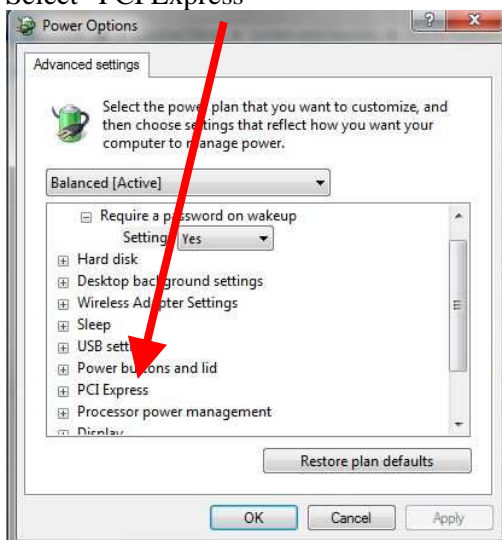
Select “Change Plan Settings”



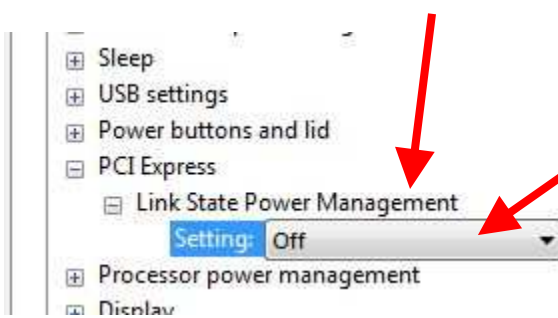
Select “Change Advanced Power Settings”



Select “PCI Express”



Select “Link State Power Management” and make sure it is set to “OFF”



Select “OK” after this is done and make sure to re-boot the system.

Note 1 : BIOS PCIe Link Power management

On all systems BIOS setting must be changed if required to disable all PCIe power management which is typically referred to ASPM Support.

Make sure this is set to **DISABLED**

Note 2 : PICMG® 1.3 BACKPLANES

The PCI Express® links A0 through A3 connect to PCI Express 2.0 repeaters and the repeaters connect directly to the Sandy Bridge processor. PCIe 2.0 repeaters are used to maximize signal integrity regardless of where an end-point device is located on a PICMG 1.3 backplane.

The multiple PCIe links from the processor (links A0, A2 and A3) are typically affected by the PCIe link power management settings and the Matrix cards will enter a L0 state which causes a configuration space reset. Link Power management must be disabled at all levels for this type of system configuration.

Contact Information

Telephone	1 (866) 478-4491
Company Fax	(505) 883-1375
Email	grt@greatrivertech.com
Web Address	www.greatrivertech.com